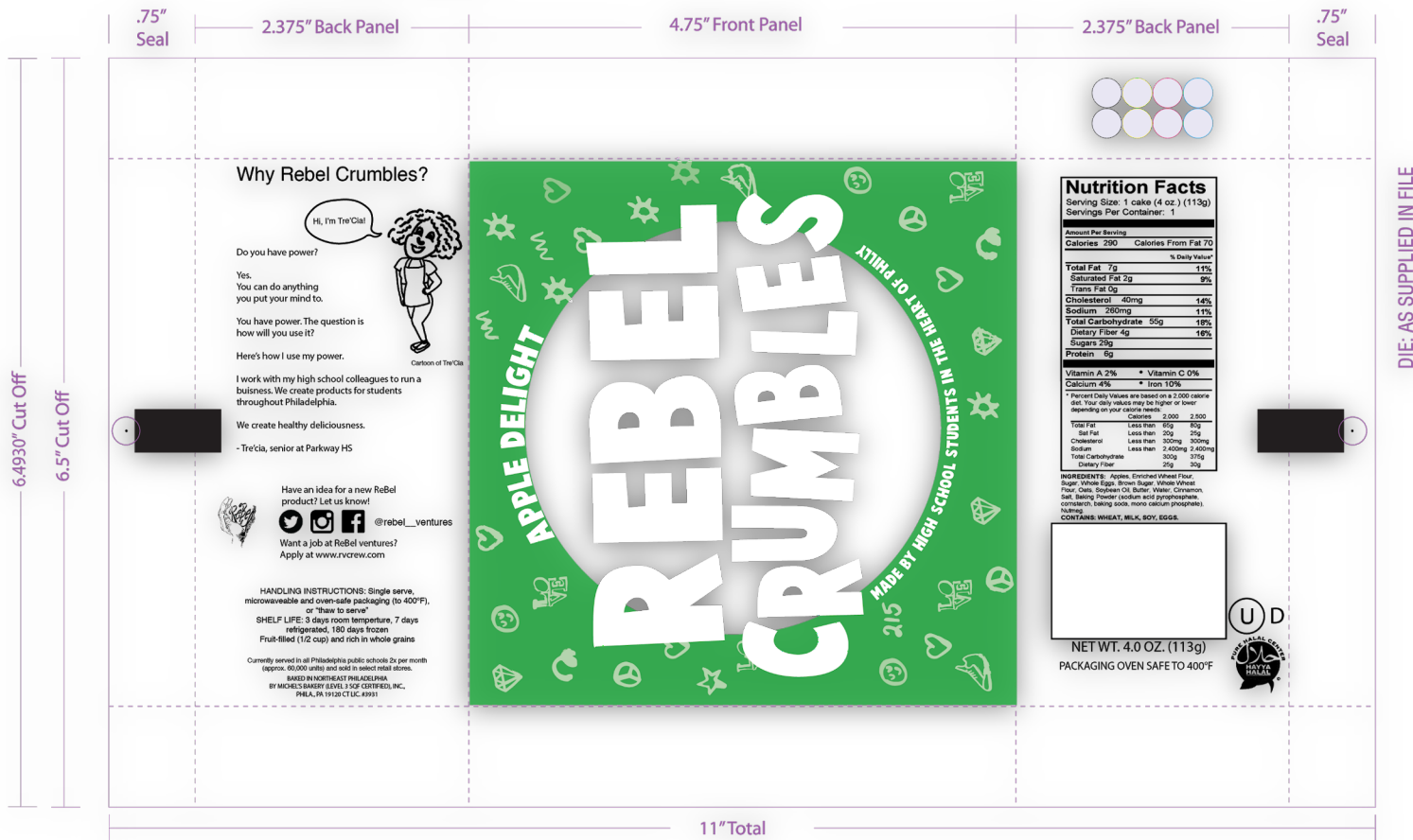


Rebel Crumbles Final Presentation

April 16, 2020



11" x 6.5" Dieline





REBEL CRUMBLES

APPLE
DELIGHT

CREATED BY HIGH SCHOOL STUDENTS IN THE HEART OF PHILLY

11" x 6.5" Dieline

.75" Seal

2.375" Back Panel

4.75" Front Panel

2.375" Back Panel

.75" Seal

6.4930" Cut Off

6.5" Cut Off

Why Rebel Crumbles?



Do you have power?
yes.
You have power. The question is
how will you use it?

Here's how i use my power.

i work with my high school colleagues to run a
business, we create products for students
throughout philadelphia.

we create healthy deliciousness.

- Tre'cia, senior at parkway west hs

Have an idea for a new
rebel product? let us know!

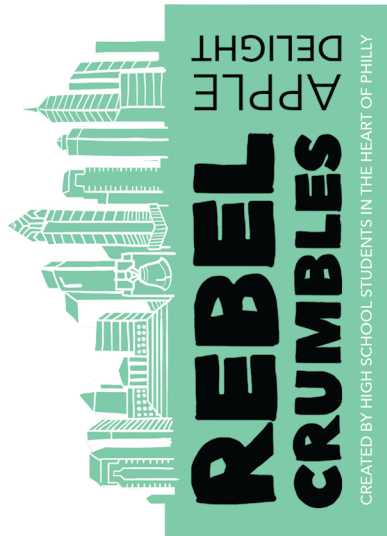


@rebel__ventures

want a job at rebel ventures?
apply at www.rvcw.com



date code



Nutrition Facts

Serving Size: 1 cake (4 oz.) (113g)
Servings Per Container: 1

Amount Per Serving		
Calories 280	Calories From Fat 70	
		% Daily Value*
Total Fat 7g		11%
Saturated Fat 3g		6%
Trans Fat 0g		
Cholesterol 40mg		14%
Sodium 200mg		11%
Total Carbohydrate 55g		10%
Dietary Fiber 4g		16%
Sugars 25g		
Protein 6g		
Vitamin A 2%	Vitamin C 0%	
Calcium 4%	Iron 10%	
* Percent Daily Values are based on a diet of other people's secrets.		
Total Fat: Less than 65g 65g		
Saturated Fat: Less than 20g 20g		
Sodium: Less than 300mg 300mg		
Total Carbohydrate: 30g 30g		
Dietary Fiber: 2g 2g		

INGREDIENTS: Apples, Enriched Wheat Flour, Sugar, White Eggs, Brown Sugar, Whole Wheat Flour, Oats, Enriched Oat, Butter, Water, Cream, Salt, Baking Powder (sodium acid pyrophosphate, cornstarch, baking soda, mono calcium phosphate), Nutmeg.
CONTAINS: WHEAT, MILK, SOY, EGGS.



NET WT. 4.0 OZ. (113g)
PACKAGING OVEN SAFE TO 400°F

BAKED BY MICHEL'S BAKERY, INC., PHILA., PA 19120 CT LIC. #9991

DIE: AS SUPPLIED IN FILE

11" Total



CREATED BY HIGH SCHOOL STUDENTS • FROM THE HEART OF PHILLY

REBEL CRUMBLES

APPLE DELIGHT

11" x 6.5" Dieline

.75" Seal

2.375" Back Panel

4.75" Front Panel

2.375" Back Panel

.75"
Seal

Why Rebel Crumbles?

Do you have power?

Yes.
You can do anything
you put your mind to.

You have power. The question is how will you use it?

Here's how I use my power.

I work with my high school colleagues to run a business. We create products for students throughout Philadelphia.

We create healthy deliciousness.

- Tre'cia, senior at Parkway HS

Have an idea for a new ReBel product? Let us know!




[@robel_ventures](#)

Want a job at ReBel ventures?
Apply at www.rvcrew.com

HANDLING INSTRUCTIONS: Single-serve, microwaveable and oven-safe packaging (to 400°F), or "throw to serve"

SHELF LIFE: 3 days room temperature, 7 days refrigerated, 180 days frozen
Fruit-filled (1/2 cup) and fish in whole grains

Currently served in all Philadelphia public schools 2¢ per month (approx. \$5,000/yr) and sold in select food stores.
 BASED IN NORTH-EAST PHILADELPHIA
 BY MICHEL'S BAKERY SUPPLY, A SQF CERTIFIED, INC.,
 PHILA, PA 19120 CT LIC. 255921

date couie

FROM THE HEART OF PHILLIPS

REBEL CRUMBLER

APPLE DELIGHT

Nutrition Facts

Serving Size: 1 cake (4 oz.) (113g)
Servings Per Container: 1

Amount Per Serving		
Calories 190	Calories From Fat 70	% Daily Value
Total Fat 7g		14%
Saturated Fat 3g		6%
Trans Fat 0g		
Cholesterol 40mg		80%
Sodium 240mg		12%
Total Carbohydrate 55g		100%
Dietary Fiber 4g		8%
Sugars 20g		
Protein 6g		

	Vitamin A 2%	* Vitamin C 0%
Calcium 4%	* Iron 10%	

* Percent Daily Values are based on a diet of other people's secrets.

	Calories	3,000	3,500
Total Fat	Less than	80g	80g
Serfat	Less than	35g	35g
Cholesterol	Less than	30mg	30mg
Sodium	Less than	3,400mg	3,400mg
Total Carbohydrate		300g	370g
Dietary Fiber		26g	36g

INGREDIENTS: Apples, Cylindric Wheat Flour, Sugar, White Eggs, Green Sugar, Whole Wheat Flour, Raisins, Baking Soda, Butter, Water, Creamer, Salt, Instant Powdered Milk and pyrophosphate, cornstarch, baking soda, more sodium phosphate, Nutmeg.

NET WT. 4.0 OZ. (113g)
PACKAGING OVEN SAFE TO 400°F

6.4930" Cut Off -

6.5" Cut Off

DIE: AS SUPPLIED IN FILE

11" Total

Created by High School Students in the Heart of Philly



REBEL
CRUMBLES

Apple Delight

11" x 6.5" Dieline

.75" Seal

2.375" Back Panel

4.75" Front Panel

2.375" Back Panel

.75" Seal

6.4930" Cut Off

6.5" Cut Off

Why Rebel Crumbles?

Do you have power?

Yes.
You can do anything
you put your mind to.You have power. The question is
how will you use it?

Here's how I use my power.

I work with my high school colleagues
to run a business. We create products
for students throughout Philadelphia.

We create healthy deliciousness.

- Tre'cia, senior at Parkway HS



Have an idea for a new Rebel

product? Let us know!

@rebel_ventures

Want a job at Rebel ventures?

Apply at www.rvcrew.comHANDLING INSTRUCTIONS: Single serve,
microwavable and oven-safe packaging (to 400°F).

or "Thaw to serve"

SHELF LIFE: 3 days room temperature, 7 days

refrigerated, 180 days frozen

Fruit-filled (1/2 cup) and rich in whole grains

CURRENTLY SERVED IN ALL PHILADELPHIA PUBLIC SCHOOLS 25 PER MONTH

100%K, 100%K, 100%K AND 100%K FROM 100%K

MADE IN PHILADELPHIA

BY MOORE'S BAKERY (L&L), 3 1/2' CANTON, INC.,

PHILA, PA 19120 CT US 20001

Created by high school students in the heart of Philly



REBEL CRUMBLES

Apple Delight



Nutrition Facts

Serving Size: 1 cake (4 oz.) (113g)
Servings Per Container: 1Amount Per Serving
Calories 280 Calories From Fat 70

% Daily Value*

Total Fat 7g 14%

Saturated Fat 3g 6%

Trans Fat 0g 0%

Sodium 40mg 8%

Total Carbohydrate 55g 18%

Dietary Fiber 4g 8%

Sugars 20g

Protein 10g

Vitamin A 25% Vitamin C 5%

Calcium 45% Iron 15%

*Percent Daily Values are based on a diet of other people's secrets.

Total Fat 7g 14%

Saturated Fat 3g 6%

Trans Fat 0g 0%

Sodium 40mg 8%

Total Carbohydrate 55g 18%

Dietary Fiber 4g 8%

Sugars 20g

Protein 10g

Vitamin A 25% Vitamin C 5%

Calcium 45% Iron 15%

*Percent Daily Values are based on a diet of other people's secrets.

Total Fat 7g 14%

Saturated Fat 3g 6%

Trans Fat 0g 0%

Sodium 40mg 8%

Total Carbohydrate 55g 18%

Dietary Fiber 4g 8%

Sugars 20g

Protein 10g

Vitamin A 25% Vitamin C 5%

Calcium 45% Iron 15%

*Percent Daily Values are based on a diet of other people's secrets.

Total Fat 7g 14%

Saturated Fat 3g 6%

Trans Fat 0g 0%

Sodium 40mg 8%

Total Carbohydrate 55g 18%

Dietary Fiber 4g 8%

Sugars 20g

Protein 10g

Vitamin A 25% Vitamin C 5%

Calcium 45% Iron 15%

*Percent Daily Values are based on a diet of other people's secrets.

Total Fat 7g 14%

Saturated Fat 3g 6%

Trans Fat 0g 0%

Sodium 40mg 8%

Total Carbohydrate 55g 18%

Dietary Fiber 4g 8%

Sugars 20g

Protein 10g

Vitamin A 25% Vitamin C 5%

Calcium 45% Iron 15%

*Percent Daily Values are based on a diet of other people's secrets.

Total Fat 7g 14%

Saturated Fat 3g 6%

Trans Fat 0g 0%

Sodium 40mg 8%

Total Carbohydrate 55g 18%

Dietary Fiber 4g 8%

Sugars 20g

Protein 10g

Vitamin A 25% Vitamin C 5%

Calcium 45% Iron 15%

*Percent Daily Values are based on a diet of other people's secrets.

Total Fat 7g 14%

Saturated Fat 3g 6%

Trans Fat 0g 0%

Sodium 40mg 8%

Total Carbohydrate 55g 18%

Dietary Fiber 4g 8%

Sugars 20g

Protein 10g

Vitamin A 25% Vitamin C 5%

Calcium 45% Iron 15%

*Percent Daily Values are based on a diet of other people's secrets.

Total Fat 7g 14%

Saturated Fat 3g 6%

Trans Fat 0g 0%

Sodium 40mg 8%

Total Carbohydrate 55g 18%

Dietary Fiber 4g 8%

Sugars 20g

Protein 10g

Vitamin A 25% Vitamin C 5%

Calcium 45% Iron 15%

*Percent Daily Values are based on a diet of other people's secrets.

Total Fat 7g 14%

Saturated Fat 3g 6%

Trans Fat 0g 0%

Sodium 40mg 8%

Total Carbohydrate 55g 18%

Dietary Fiber 4g 8%

Sugars 20g

Protein 10g

Vitamin A 25% Vitamin C 5%

Calcium 45% Iron 15%

*Percent Daily Values are based on a diet of other people's secrets.

Total Fat 7g 14%

Saturated Fat 3g 6%

Trans Fat 0g 0%

Sodium 40mg 8%

Total Carbohydrate 55g 18%

Dietary Fiber 4g 8%

Sugars 20g

Protein 10g

Vitamin A 25% Vitamin C 5%

Calcium 45% Iron 15%

*Percent Daily Values are based on a diet of other people's secrets.

Total Fat 7g 14%

Saturated Fat 3g 6%

Trans Fat 0g 0%

Sodium 40mg 8%

Total Carbohydrate 55g 18%

Dietary Fiber 4g 8%

Sugars 20g

Protein 10g

Vitamin A 25% Vitamin C 5%

Calcium 45% Iron 15%

*Percent Daily Values are based on a diet of other people's secrets.

Total Fat 7g 14%

Saturated Fat 3g 6%

Trans Fat 0g 0%

Sodium 40mg 8%

Total Carbohydrate 55g 18%

Dietary Fiber 4g 8%

Sugars 20g

Protein 10g

Vitamin A 25% Vitamin C 5%

Calcium 45% Iron 15%

*Percent Daily Values are based on a diet of other people's secrets.

Total Fat 7g 14%

Saturated Fat 3g 6%

Trans Fat 0g 0%

Sodium 40mg 8%

Total Carbohydrate 55g 18%

Dietary Fiber 4g 8%

Sugars 20g

Protein 10g

Vitamin A 25% Vitamin C 5%

Calcium 45% Iron 15%

*Percent Daily Values are based on a diet of other people's secrets.

Total Fat 7g 14%

Saturated Fat 3g 6%

Trans Fat 0g 0%

Sodium 40mg 8%

Total Carbohydrate 55g 18%

Dietary Fiber 4g 8%

Sugars 20g

Protein 10g

Vitamin A 25% Vitamin C 5%

Calcium 45% Iron 15%

*Percent Daily Values are based on a diet of other people's secrets.

Total Fat 7g 14%

Saturated Fat 3g 6%

Trans Fat 0g 0%

Sodium 40mg 8%

Total Carbohydrate 55g 18%

Dietary Fiber 4g 8%

Sugars 20g

Protein 10g

Vitamin A 25% Vitamin C 5%

Calcium 45% Iron 15%

*Percent Daily Values are based on a diet of other people's secrets.

Total Fat 7g 14%

Saturated Fat 3g 6%

Trans Fat 0g 0%

Sodium 40mg 8%

Total Carbohydrate 55g 18%

Dietary Fiber 4g 8%

Sugars 20g

Protein 10g

Vitamin A 25% Vitamin C 5%

Calcium 45% Iron 15%

*Percent Daily Values are based on a diet of other people's secrets.

Total Fat 7g 14%

Saturated Fat 3g 6%

Trans Fat 0g 0%

Sodium 40mg 8%

Total Carbohydrate 55g 18%

Dietary Fiber 4g 8%

Sugars 20g

Protein 10g

Vitamin A 25% Vitamin C 5%

Calcium 45% Iron 15%

*Percent Daily Values are based on a diet of other people's secrets.

Total Fat 7g 14%

Saturated Fat 3g 6%

Trans Fat 0g 0%

Sodium 40mg 8%

Total Carbohydrate 55g 18%

Dietary Fiber 4g 8%

Sugars 20g

Protein 10g

Vitamin A 25% Vitamin C 5%

Calcium 45% Iron 15%

*Percent Daily Values are based on a diet of other people's secrets.

Total Fat 7g 14%

Saturated Fat 3g 6%

Trans Fat 0g 0%

Sodium 40mg 8%

Total Carbohydrate 55g 18%

Dietary Fiber 4g 8%

Sugars 20g

Protein 10g

Vitamin A 25% Vitamin C 5%

Calcium 45% Iron 15%

*Percent Daily Values are based on a diet of other people's secrets.

Total Fat 7g 14%

Saturated Fat 3g 6%

Trans Fat 0g 0%

Sodium 40mg 8%

Total Carbohydrate 55g 18%

Dietary Fiber 4g 8%

Sugars 20g

Protein 10g

Vitamin A 25% Vitamin C 5%

Calcium 45% Iron 15%

*Percent Daily Values are based on a diet of other people's secrets.

Total Fat 7g 14%

Saturated Fat 3g 6%

Trans Fat 0g 0%

Sodium 40mg 8%

Total Carbohydrate 55g 18%

Dietary Fiber 4g 8%

Sugars 20g

Protein 10g

Vitamin A 25% Vitamin C 5%

Calcium 45% Iron 15%

*Percent Daily Values are based on a diet of other people's secrets.

Total Fat 7g 14%

Saturated Fat 3g 6%

Trans Fat 0g 0%

Sodium 40mg 8%

Total Carbohydrate 55g 18%

Dietary Fiber 4g 8%

Sugars 20g

Protein 10g

Vitamin A 25% Vitamin C 5%

Calcium 45% Iron 15%

*Percent Daily Values are based on a diet of other people's secrets.

Total Fat 7g 14%

Saturated Fat 3g 6%

Trans Fat 0g 0%

Sodium 40mg 8%

Total Carbohydrate 55g 18%

Dietary Fiber 4g 8%

Sugars 20g

Protein 10g

Vitamin A 25% Vitamin C 5%

Calcium 45% Iron 15%

*Percent Daily Values are based on a diet of other people's secrets.

Total Fat 7g 14%

Saturated Fat 3g 6%

Trans Fat 0g 0%

Sodium 40mg 8%

Total Carbohydrate 55g 18%

Dietary Fiber 4g 8%

Sugars 20g

Protein 10g

Vitamin A 25% Vitamin C 5%



.75"
Seal

Why Rebel Crumbles?

14. *When The Odds*

Do you have power?

Yes.
You can do anything
you put your mind to.

You have power. The question is how will you use it?

Here's how I use my power.

I work with my high school colleagues to run a business. We create products for students throughout Philadelphia.

We create healthy deliciousness.

- Tre'cia, senior at Parkway HS.

Have an idea for a new ReBel product? Let us know!

 @nabel__ventures

Want a job at ReBel ventures?
Apply at www.rvcrow.com

HANDLING INSTRUCTIONS: Single serve, microwaveable and over-the-top packaging (to 400°F), or "heat to serve"

SHELF LIFE: 5 days room temperature, 7 days refrigerated, 180 days frozen

Fruit-filled (1.2 cup) and rich in whole grains

CURRENTLY OFFERS IN-PLANT CHEMICALS TO 2000 SCHOOLS IN 100 COUNTRIES. SEE OUR LISTING AND SEE US DIRECT FROM BEIRUT.



Nutrition Facts

Serving Size: 1 cake (4 oz.) (113g)
Servings Per Container: 1

Amount Per Serving		
Calories 190	Calories From Fat 70	% Daily Value*
Total Fat 7g		14%
Saturated Fat 3g		6%
Trans Fat 0g		
Cholesterol 40mg		8%
Sodium 290mg		12%
Total Carbohydrate 55g		10%
Dietary Fiber 4g		8%
Sugars 20g		
Protein 9g		

Vitamin A 2% • Vitamin C 0%

² Percent Daily Values are based on a diet of other people's secrets.

	Calories	3,000	3,500
Total Fat	Less than	85g	90g
Sat Fat	Less than	33g	37g
Cholesterol	Less than	90mg	90mg
Sodium	Less than	2,400mg	2,400mg
Total Carbohydrate		300g	375g
Dietary Fiber		26g	36g

Super, White Eggs, Green Super, White Wheel
Flour, Oats, Soybean Oil, Butter, Water, Cornmeal,
Salt, Baking Powder (sodium acid pyrophosphate,
sodium bicarbonate, mono sodium phosphate),
Rumage.

LONGFORD-WHEAT, MILK, SOY, EGGS

NET WT. 4.0 OZ. (113g)
PACKAGING OVEN SAFE TO 400°F

6.4930" Cut Off

6.5" Cut Off

DIE: AS SUPPLIED IN FILE

11" Total

Thank you!

Designed by undergraduate and graduate students in **Graphic Design Practicum**,
Undergraduate Fine Arts and Design Program, University of Pennsylvania, **Spring 2020**